



Driving Sustainable Investment

Rural Prosperity Bond

LAB INSTRUMENT ANALYSIS

September 2020

DESCRIPTION & GOAL —

The Rural Prosperity Bond is a specialized debt instrument employed by the World Resources Institute to help scale-up land restoration efforts. The combination of the instrument with WRI's Land Accelerator, delivers a holistic package of financing and capacity-building for restoration enterprises that are too small for commercial banks and too large for microfinance.

SECTOR —

Sustainable Agriculture

FINANCE TARGET —

Concessional public funding, development finance institutions and foundations. Private impact investors and corporates.

GEOGRAPHY —

For pilot phase: Kenya, Ethiopia, Rwanda

In the future: Africa, South Asia and Latin America

The Lab identifies, develops, and launches sustainable finance instruments that can drive billions to a low-carbon economy. The 2020 Global Lab cycle targets four specific sectors across mitigation and adaptation: nature-based solutions; sustainable agriculture for smallholders in sub-Saharan Africa; sustainable energy access; and sustainable cities, as well as three regions: India, Brazil and Southern Africa.

AUTHORS AND ACKNOWLEDGEMENTS

The authors of this brief are Daniela Chiriac and Paul Rosane.

The authors would like to acknowledge the following professionals for their cooperation and valued contributions including the proponents Sofia Faruqi, Sean DeWitt and Vanessa Haggans (WRI) and the working group members: Ines Angulo (CIF), Alice Caravani (UK BEIS), Julie Cheng (IFAD), David Ekabouma (African Guarantee Fund), Anne-Katrin Gruenewald (DWS), Daniel Kandy (US Department of State), Moses Kimani (Lentera Ltd.), Thomas Legrand (independent), Norah Magero (Expressions Global), Kiyoshi Okumura (IFC), Mike Reddaway (DFID), Sebastien Subsol (IFAD), Chiara Trabacchi (CIF). The authors would like to acknowledge the contribution of the experts and professionals: Saif Ahmed (Independent), Iain Church (Moringa Miracles), Patrick Flynn (Kiva), Tanja Havemann (Clarmondial), Luke Seidl (Kiva), Noor Ullah (ADB), Theophile Hakizimana (Asili Natural Oils).

The authors would also like to thank Barbara Buchner, Vikram Widge, Angela Falconer, Leigh Madeira, Ricardo Narvaez, Ben Broche, Elysha Davila, Rob Kahn, and Júlio Lubianco for their continuous advice, support, comments, design, and internal review.

The Lab's 2019/2020 programs have been funded by the Australian, Dutch, German, and UK governments, as well as Bloomberg Philanthropies, GIZ, the International Fund for Agricultural Development (IFAD), the Rockefeller Foundation, and the Shakti Sustainable Energy Foundation. [Climate Policy Initiative](#) (CPI) serves as Secretariat and analytical provider.



SUMMARY

Land degradation has become a major threat to populations, economies, and ecosystems that are already vulnerable to the effects of climate change and are under additional strain due to the current COVID-19 pandemic. Small and medium enterprises (SMEs) working on land degradation are essential for rural economies as they play a major role in enhancing food security and creating rural jobs. However, they struggle to access the financial resources necessary to grow their businesses.

The Rural Prosperity Bond (RPB) will provide loans to small and medium enterprises (SMEs) working in land restoration in Africa, South Asia and Latin America.

The support provided to the proponents by the Lab analytical team together with the Working Group, was centered around four main criteria. Our analysis demonstrated that the instrument addresses them all successfully.

- **Innovative:** The instrument will target SMEs too big for microfinance, and yet too small for commercial banks. It will provide them with small ticket-size loans adapted to their needs. Moreover, through discounted interest rates, it will stimulate these businesses to facilitate market access for farmers. The RPB will be used by the Land Accelerator, an entrepreneurship program, which acts as a de-risking mechanism by screening and training the potential borrowers.
- **Actionability:** The RPB will benefit from an existing investment pipeline in Africa, built through the Land Accelerator and already counting 26 SMEs. Led by the World Resources Institute, the Accelerator is expanding and will soon include new graduates from South Asia and South America.
- **Catalytic:** The replication to other regions based on the same model will permit the instrument to reach hundreds of SMEs and thousands of smallholders within six years. The instrument can help to increase household incomes, sequester carbon, and improve ecosystem services. It generates economic, environmental, and social returns and contributes to a green recovery in areas that are hit hard by the pandemic.
- **Financial Sustainability:** The Rural Prosperity Bond will start with a one-year pilot phase funded by grants and targeting enterprises based in three East African countries. In the scale-up stage, the instrument will decrease the grant funding and add first-loss capital and commercial debt. The commercial structure will include mainly commercial capital with a reduced first-loss tranche.

The Rural Prosperity Bond is an innovative financial instrument, immediately actionable, with the capacity to replicate and produce positive impact in rural economies in emerging markets. We therefore recommend it for the Lab's endorsement.

In the next months, the World Resources Institute (WRI) will determine the most appropriate legal and financial structure for the Rural Prosperity Bond and will select a special purpose vehicle (SPV) manager. WRI is also initiating fundraising efforts with an immediate focus on grant funding for the pilot phase.

TABLE OF CONTENTS

SUMMARY	3
CONTEXT.....	5
CONCEPT	6
1. Instrument Mechanics.....	6
1.1 Technical assistance: Land Accelerator.....	6
1.2 Access to finance: Rural Prosperity Bond	7
2. Innovation	10
2.1 Barriers Addressed	10
2.2 Small loans combined with tailored capacity building	11
2.3 Challenges to Instrument Success.....	12
3. Implementation Pathway and Replication.....	13
3.1 Target market for pilot and beyond.....	13
4. Financial Impact and Sustainability	15
4.1 Private Finance Mobilization and Replication Potential.....	15
4.2 Financial Modeling	16
5. Environmental and Socio-economic Impact	17
5.1 Environmental impact	17
5.2 Social impact	18
5.3 Sectoral Impact	19
NEXT STEPS	19
REFERENCES	20
6. ANNEXES.....	23
6.1 Annex 1 – Land accelerator Selection criteria	23
6.2 Annex 2 - Full list of comparable instruments.....	23
6.3 ANNEX 3 - Quantitative modeling assumptions	26
6.4 Annex 4 - Impact assessment methodology	28

CONTEXT

Land degradation reduces the carbon sequestration potential of soil, causes massive economic costs as well as productivity losses. It threatens food security in countries that are highly vulnerable to climate change.

In Africa alone, 65% of land is affected by degradation (WRI, 2015) which causes reduction in soil productivity (Gibbs et al., 2015) and loss of various ecosystem services including water retention, carbon sequestration, and biodiversity. Climate change, through extreme weather events and changes in rainfall patterns, is directly contributing to land degradation. Every year, an additional 6 million hectares of land are estimated to become degraded in Africa (WRI, 2020), an area the size of Croatia. If no action is taken, the continent's progressive loss of ecosystem services could cost PPP USD 4.6 trillion¹ from 2015-2030, due to annual yield losses of 278 million tons of cereals (ELD initiative, 2015).

An estimated 69 million African people have already experienced malnutrition and food shortages in 2019 (FSIN, 2020). The current COVID-19 crisis has further challenged food security and employment in Africa. As household income decreased, so has local food demand. Agricultural labor availability is also deeply hit due to sanitary and logistical restrictions, leading to higher unemployment and altered patterns in food production and distribution (ISF et al., 2020a). Export-bound value chains also suffered from high demand volatility and disruptions. As a result, the farmers growing these crops are facing even greater food insecurity (ISF et al., 2020b).

Rehabilitation of degraded land improves food production on existing cropland, therefore limiting further agriculture-driven deforestation (Gibbs et al., 2015). In addition, restoring soils and ecosystems enhance climate resilience (Griscom et al., 2017) and the return of biodiversity (Benayas et al., 2009). In this context, restoration represents a great financial opportunity: restoring African croplands can generate 2.8 trillion USD worth of cereals over the next 15 years (ELD initiative, 2015).

Rural small and medium enterprises working on sustainable agriculture and forestry are crucial to land restoration, as they account for 80% of local food supply chains and provide 25% of rural employment (ISF et al., 2019). However, they struggle to access the financial resources necessary to grow their businesses. In Sub-Saharan Africa, there is an estimated annual lending gap of USD 100 billion for agricultural SMEs (ISF and all, 2019). The Rural Prosperity Bond, proposed by the World Resources Institute (WRI), is a debt instrument that provides access to credit for these enterprises in Africa, with plans to expand to South Asia and Latin America.

¹ 4.6 trillion Purchasing Power Parity (PPP) USD are equivalent 1.9 trillion constant 2011 USD.

CONCEPT

1. INSTRUMENT MECHANICS

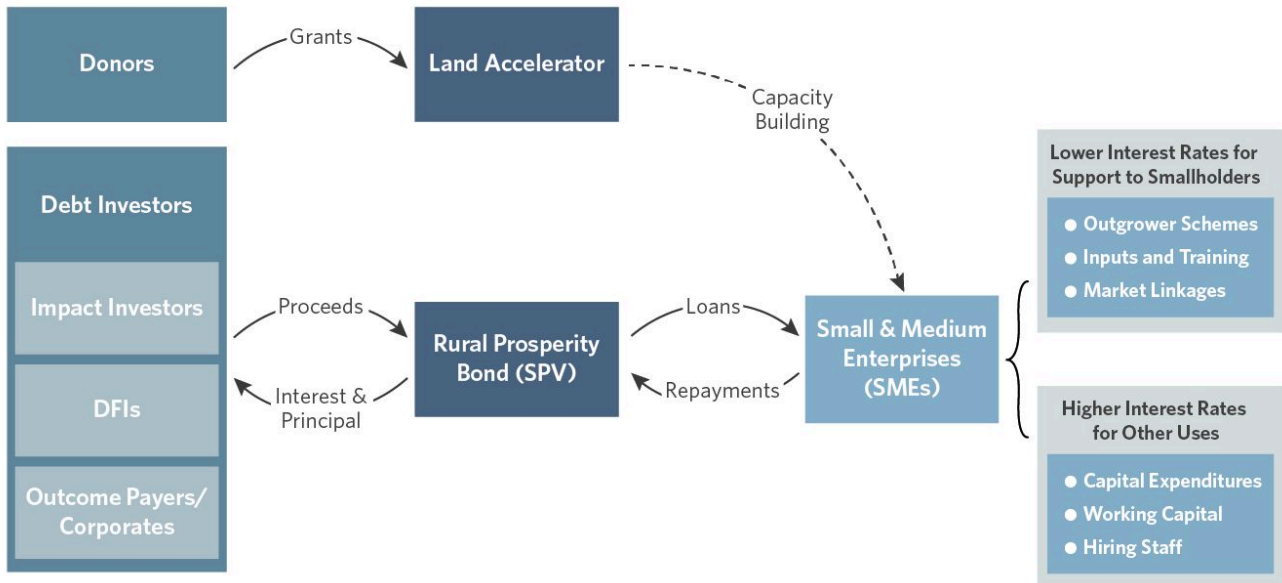
The Rural Prosperity Bond provides credit to businesses active in sustainable agriculture and forestry, thus enabling them to grow and serve more smallholders.

The Rural Prosperity Bond is a debt instrument that will be used by the [Land Accelerator](#), a WRI initiative that provides training to selected small and medium enterprises (SMEs) that restore degraded forests and farmland. The instrument aims to provide access to credit for the enterprises graduating from the Land Accelerator, thus enabling them to scale up their business and restoration work. This segment of the market is particularly underserved by financial markets: agri-businesses tend to be too large for micro-finance institutions and too small for most commercial banks, representing what is referred to as “the missing middle.” The scarcity of capital prevents these businesses from growing faster and expanding their smallholder customer base.

1.1 TECHNICAL ASSISTANCE: LAND ACCELERATOR

Financed by grants from private foundations and institutional donors (Figure 1), the Land Accelerator was launched in 2018 by WRI and has been held twice in Africa, producing 26 graduate enterprises. The first cohort in South Asia launched in June 2020 and the first cohort in Latin America is expected to launch in November 2020. The Accelerator provides a four-month training program to selected small and medium enterprises active in sustainable agriculture and forestry. The curriculum is designed to build entrepreneurs' technical and business capacity, as well as improving the management of their farmer network. This helps to reduce business risks and increase their bankability. Customized mentoring supports the selected SMEs to improve their business plans while advising them on the most appropriate growth strategies. In addition, the accelerator creates opportunities for investor introductions and networking among enterprises. For future cohorts in Africa, South Asia and Latin America, the Land Accelerator will add training modules on the mechanics of the Rural Prosperity Bond (how to access and manage credit) to facilitate successful loan management. All of the SMEs that completed the Land Accelerator in previous cohorts as well as future ones will be eligible for loans provided by the Rural Prosperity Bond.

Figure 1: Instrument Mechanics



*Dotted line refers to non-financial connection

1.2 ACCESS TO FINANCE: RURAL PROSPERITY BOND

Depending on their needs, the SMEs graduating from the LA will be able to apply for credit from the Rural Prosperity Bond², which is envisioned to be a special purpose vehicle (SPV) managed in collaboration with a third party. Whether the SPV will aggregate capital as a fund or through debt issuance (in the form of a loan or a bond) will be finalized during the pilot phase with funders and the selected SPV manager. Initial analysis (Box 1) indicates that a loan structure would be the most conducive for the instrument given the planned timing of capital deployment and the risk/return profile of cash flows.

² “Bond” in the name of the instrument reflects the social contract that exists between restoration enterprises and smallholder farmers. Depending on the final decision on the financial structure and investor preferences, the name may be modified at a later stage.

Box 1: Summary analysis of possible financial structures of RPB

Bond: allows flexible participation of investors but less flexibility in the repayment schedule. The relatively small size of the instrument and the expected cashflow (numerous small-size deals concluded at various dates) are not compatible with a bond model, as majority of loans would be placed from the third year onwards. In addition, the provision of loans is not aligned with the primary role of bonds, i.e., to raise funds specific large projects.

Debt SPV or Loan: allows customized participation of a small group of investors and can (depending on investors' preferences) build in flexibility in the repayment schedule, both of which suit the anticipated cashflow of the instrument. It can be set up to allow for capital calls as needed and regular repayments to investors.

Fund: can generate high set-up and operating costs, but can also make it straightforward for investors to participate. A fund structure would make the instrument easier to scale. Similar to the bond, this structure may not be conducive for an instrument the size of the RPB.

Assuming an SPV model, the Rural Prosperity Bond would work as shown in Figure 1. As SMEs graduate from the Land Accelerator, the SPV manager evaluates each SME based on its funding needs and expected risk, offering loans to creditworthy SMEs at interest rates that are tied to use of proceeds and farmer engagement. After an initial capitalization, the RPB will call for capital from investors as needed to deploy additional loans to the SMEs. When loans are repaid from SMEs, the RPB aggregates cash flows to repay investors their capital plus a stated return.

Discounted interest rates linking SMEs and Farmers

One key element of the RPB is the use of discounted interest rates to incentivize SMEs to deliver social and environmental impact through their work with smallholder farmers. A discounted rate will be offered for uses that directly support smallholders, while a base rate will be charged for loans used for other purposes.

For example, enterprises committing to dedicate more than 50% of the loan for one of the following uses will benefit from a 2% discount in the interest rate.

- 1) **Provision of inputs to farmers:** enterprises produce and/or commercialize sustainable agriculture inputs such as organic fertilizers and pesticides, irrigation systems, and seeds and seedlings. These inputs are sold to smallholder farmers, who use them to restore their plots of land. In many cases, the business relationship also entails the provision by the SMEs of (a) credit or facilitating access to credit; (b) free training or advice to farmers on the correct use of inputs and/or (c) facilitating market linkages with large buyers. In this way, the enterprises not only consolidate their relationship with customers, but also ensure the inputs produce the expected results, thus maintaining and potentially growing demand and making their business sustainable. By expanding the customer base, this acts as a de-risking mechanism for the Instrument by lowering the risk of loan default for the enterprises financed.
- 2) **Purchase of produce through offtake agreements:** The enterprises source the produce from outgrower networks of farmers and subsequently aggregate it for onward selling to traders, and/or process it. This can include agricultural produce or timber. In some cases, the enterprises also facilitate the access of

farmers to inputs. SMEs engaging in this type of collaboration enable essential linkages of farmers to markets, hence allowing smallholders to increase their income. This grows the rural economy and makes a major contribution to the instrument's socio-economic impact.

- 3) **Provision of inputs and purchase of produce:** This category includes SMEs that combine the two previous modalities. The distinguishing feature is that the enterprises are not merely facilitating the access of smallholders to inputs, credit or markets, but they themselves provide the full range of services. When farmers access input on credit, they can repay in the form of produce at the end of the season. At the level of the RPB, this full-circle model acts as a de-risking mechanism and directly contributes to its socio-economic impacts.

The use of funds will be assessed at the application stage when SMEs will be required to submit a brief plan for how the funds will be used. There will also be periodic surveys to track spending. In addition, the instrument may limit the proportion of SMEs that qualify for the lower interest rate to 50% of the portfolio. This will incentivize borrowers to prioritize benefits for smallholders and will also result in more predictable cash flows for the Rural Prosperity Bond.

Investors

At **commercial stage**, the Rural Prosperity Bond is capitalized from proceeds from debt investors blending two categories of capital:

- **Senior debt (80%)** features lower risk since it has higher priority in terms of capital repayments and interest payment. This tranche aims to attract private impact investors and development finance institutions, among others.
- **First loss tranche (20%)** bears higher risk since initial losses will be absorbed by this tranche. Only after this tranche is exhausted will losses float to the senior level. Thus, it serves as a risk buffer for the senior class of capital. This tranche is designed to catalyze participation by private investors. It will be capitalized from public and philanthropic sources interested in supporting rural prosperity.

Land restoration

As it relies on the Land Accelerator for a pipeline of eligible SMEs, the RPB will use the same working definition of land restoration. To access a loan, the enterprises' business focus should be in one of the activities listed below. Consequently, the farmers they serve will be involved in the same type of activities.

- Agroforestry and low carbon, sustainable/climate-smart agricultural practices that add trees to farms
- Production of organic fertilizer, pesticides and nature-based soil amendments
- Sustainable silvopastoral practices that add trees to grazing land
- Natural and assisted regeneration that grows trees for private or public clients
- Sustainable forestry and non-timber forest product harvesting
- Native grassland restoration (no trees added to the landscape)
- Interventions that avoid deforestation, e.g., by reducing the demand for unsustainably sourced fuelwood
- Technologies that inform/support/facilitate the above

2. INNOVATION

The Rural Prosperity Bond supports land restoration enterprises that graduate from the Land Accelerator through a unique combination of tailored capacity building with a debt facility that includes with de-risking mechanisms

2.1 BARRIERS ADDRESSED: MARKET, BUSINESS AND FINANCIAL SUPPLY CHALLENGES ENCOUNTERED BY RESTORATION ENTERPRISES

The Rural Prosperity Bond is designed to address several of the barriers limiting investments in land restoration SMEs in Africa.

External barriers – market and geopolitical

Enterprises operating in agriculture and forestry in Africa are inherently vulnerable to a range of exogenous risks, and restoration of degraded land requires long time horizons. (WRI, 2017). However, long-term investments in the sector are deterred by climate-related risks since African countries are some of the most vulnerable to climate change.³ These are coupled with market, regulatory, and political volatility as well as insecure land tenure (WRI, 2018; CSAF, 2019).

Solution: The Rural Prosperity Bond addresses these exogenous barriers by incorporating in its structure grant funding and first-loss capital. These de-risking mechanisms are meant to absorb potential losses and thus attract private investment. Additionally, the loan interest rate structure offered by the RPB aims to incentivize SMEs to support their smallholder networks and facilitate market linkages. These help farmers to sell their produce, thus mitigating some of the risks related to agricultural market volatility. Also, land restoration boosts climate resilience, which lessens the risk of losses caused by natural disasters and extreme weather events.

Internal barriers - Business risks

Restoration enterprises in Africa and Asia often lack formal technical and business training (WRI), as well as management capacity and adequate financial and accounting skills (ISF and all, 2019). The capacity gap is further exacerbated by the remote, often rural location of most agricultural enterprises, without connection to skilled human resources, investor and start-up networks, typically concentrated in urban centers.

Solution: WRI's Land Accelerator program for SMEs working on land restoration combines business and technical training with mentoring and networking. Mentoring by experts supports the participants to improve their business plans and develop their financial acumen, while improving the management of their farmer network. This helps to reduce business risks and increase commercial viability. The Land Accelerator program therefore generates a pipeline of curated and high-quality SMEs that are eligible for loans from the Rural Prosperity Bond.

Mismatch between capital supply and demand

While commercial banks provide credit to larger agri-businesses and microfinance institutions cater to the needs of micro-businesses, capital markets offer few options for debt financing between \$50,000-250,000, and the few alternatives available bear high interest rates (Dalberg, 2018). Typical forestry and agriculture businesses require capital in this range, often labeled as the "missing middle". Lack of credit history and collateral makes it difficult for local lenders to assess the creditworthiness of rural SMEs and limits the appetite of financiers to go beyond established value chains such as coffee and cocoa (Dalberg 2018).

³ <https://gain.nd.edu/our-work/country-index/>

The small investment sums and the challenges in performing due diligence result in high transaction costs which deter investors.

Solution: The instrument provides small-size loans with averages between \$100,000 and 200,000, thus directly addressing the missing middle. The loans also give freedom of use to the SMEs, with an incentive for the funds to be used toward smallholder farmers. The interest rates will be adapted based on the interest rates prevalent⁴ in each SME's country of operations, thus making it more accessible to the enterprises.

To be able to offer these services, the Rural Prosperity Bond will work to systematically reduce transaction costs, possibly by using virtual due diligence among others.

2.2 INNOVATION: SMALL LOANS COMBINED WITH TAILORED CAPACITY BUILDING FOR RESTORATION ENTERPRISES

The extensive screening of existing financial instruments (full list in Annex 3) focusing on land restoration revealed that the Rural Prosperity Bond features a unique combination of three essential components.

Focus on land restoration SMEs. Among other facilities focusing on restoration, few use small and medium enterprises as the entry point as the RPB does.

Small ticket size (\$100,000-\$200,000 on average). Among the few financial instruments providing small size loans (as low as 100,000 USD), none focuses on restoration.

Capacity building. The association of the RPB with the Land Accelerator ensures the provision of tailored capacity building to the rural enterprises eligible for loans and acts as a pre-screening mechanism for the instrument.

Table 2- Shortlist of comparable instruments.

Similar Instruments	Description	Differences
Responsible Commodities Facility – Brazil	Provides finance to farmers that commit to deforestation-free soy cultivation in the Cerrado, in compliance with the Brazilian Forest Code.	<ul style="list-style-type: none"> - Country, biome and crop-specific with focus on farmers - Requires a specific regulatory framework and is applicable to internationally traded crops
IFC Forests Bond – Kenya	Kasigau Corridor REDD+ project: forest conservation and sustainable forestry	<ul style="list-style-type: none"> - No specific focus on agri-SMEs: designed around a specific wildlife sanctuary and the surrounding communities - Strongly linked to officially protected areas and does not involve supply chain actors
Acumen Resilient Agriculture Fund (ARAF)	Finances SMEs that promote climate-resilient agriculture. Help them scale up to qualify for other types of capital investments. Scope narrowed to three countries to limit travel and operational costs.	<ul style="list-style-type: none"> - Targets larger SMEs with USD inflows (SMEs that export their products) - Loan minimums set to higher levels (starting \$1m). - Provides equity capital

⁴ For similar size loans to SMEs operating in the same sector

2.3 CHALLENGES TO INSTRUMENT SUCCESS

Several potential challenges may hinder execution of the Rural Prosperity Bond concept and its financial sustainability. Thus, the design of the instrument incorporates a number of mitigation strategies.

Table 2: Challenges to instrument success and mitigation strategies

	Potential Challenge	Management Strategy
Portfolio Risks	Impacts of COVID-19 pandemic may include higher cash flow volatility, lower customer spending, and tighter export-import restrictions	Based on consultation with SMEs, incorporate training in the Land Accelerator curriculum to support businesses to adapt to the "new normal"
	SME loan default risk due to unreliable agricultural supply chains or side-selling by farmers	(i) Pipeline of SMEs vetted by the Land Accelerator and trained on how to manage their network of farmers (ii) Differentiated interest rates incentivizing the use of loans to: <ul style="list-style-type: none"> • consolidate relationships with farmers by combining input sales with training, which should stimulate further demand for SMEs' services • link farmers to large markets. This guarantees a buyer for the produce and provides higher prices than farmers can negotiate on their own, thus discouraging side selling (iii) Potential causes of default will be assessed during the pilot and scale-up phases to determine appropriate risk mitigation measures for the commercial phase. This could include an increase of the first-loss tranche
	SME loan default risk due to extreme weather and crop pests/diseases	Diversified loan portfolio in terms of SMEs' geographies, markets and crops they focus on
	SME loan default risk due to currency volatility ⁵	(i) Diversified portfolio in terms of countries represented (ii) Several SMEs focus on exports and are less exposed to home-country currency dynamics (iii) Loan interest rates based on benchmark from the SME's country of operation mean the country risk factor is factored in
Operating Risks	High operating costs due to small size loans	(i) Maximize the use of digital technology for due diligence, loan management and monitoring (ii) Realize economies of scale through inclusion in the portfolio of second and third loans for existing borrowers ⁶
	The planned number of loans might be too high to ensure proper management	WRI will assess management needs during the pilot phase and adjust the number of loans for the scale-up and commercial phases accordingly

⁵RPB will extend loans in USD, therefore local currency volatility rests with the borrower SMEs

⁶Loans to new borrowers are shown to significantly increase operating costs when compared to those to existing borrowers (CSAF and USAID, 2018).

3. IMPLEMENTATION PATHWAY AND REPLICATION

In the Pilot Phase, around 40 SMEs that graduate from the Land Accelerator Africa will be eligible for loans. Subsequently, the instrument's pipeline will grow six-fold and include enterprises from Africa, South Asia and Latin America

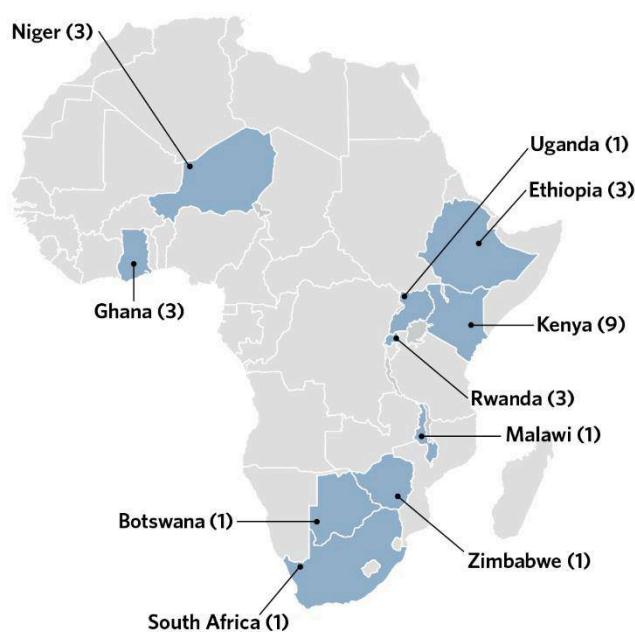
3.1 TARGET MARKET FOR PILOT AND BEYOND

The World Resources Institute (WRI) will implement a one-year grant-funded pilot for the Rural Prosperity Bond. The objective is to test the concept by extending around 10 loans of approximately USD50,000 each to SMEs that operate in three East African countries: Kenya, Ethiopia and Rwanda. The beneficiaries will be selected among the SMEs that participated in the 2018 and 2019 cohorts of the Land Accelerator Africa. Adding the next cohort, the total pool eligible for the pilot will be around 40 enterprises. The pilot may also expand to South Asia and Latin America.

Figure 2: The current Rural Prosperity Bond pipeline: 26 SMEs who have already graduated from the Land Accelerator in 2018 and 2019 are operating across 10 Sub-Saharan African countries.⁷

In the scale-up phase, the pipeline of eligible enterprises will include future Africa cohorts as well as graduates from the new South Asia and Latin America cohorts, launching in 2020 and 2021 respectively. In order to maximize the impact of the Rural Prosperity Bond, additional SMEs that have not completed the accelerator will also be eligible at a later stage, conditional on proving similar level of skills and management systems.

The concept behind the Rural Prosperity Bond is thus highly replicable in various geographies as long as it is attached to an SME accelerator program or a similar scheme that is able to generate a high-quality pipeline of borrower candidates.

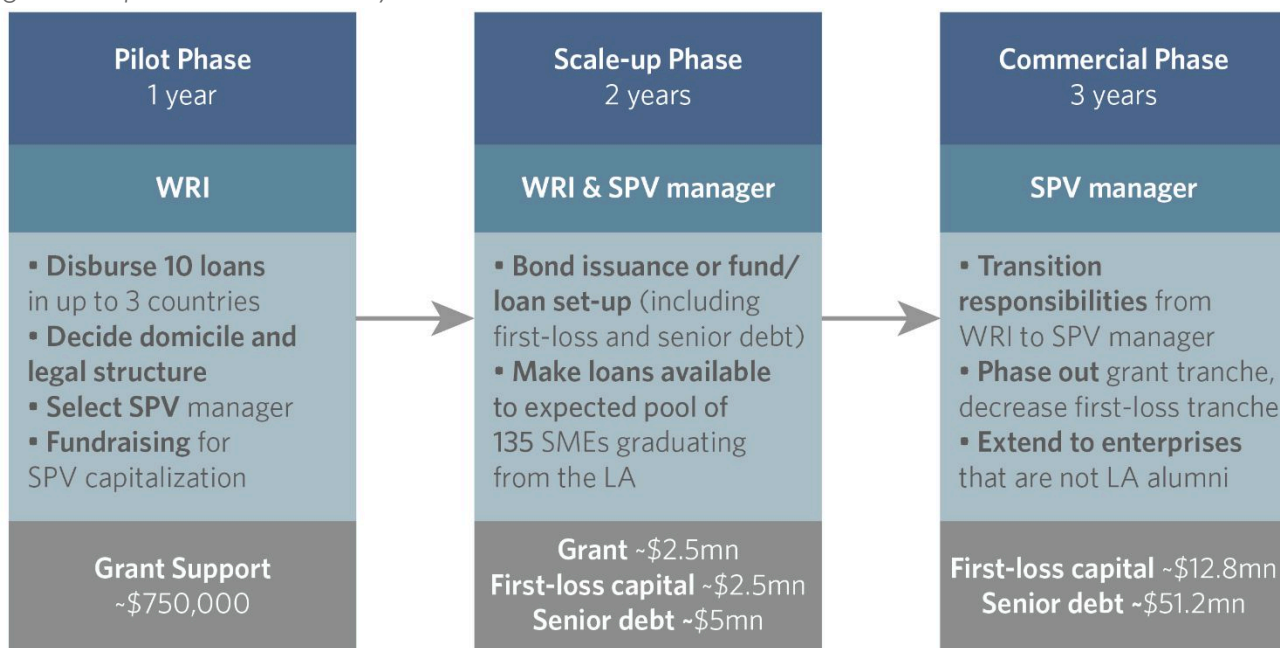


3.2 IMPLEMENTATION TIMELINE

WRI will implement the pilot phase of the Rural Prosperity Bond, while searching for a private asset manager suited to manage the special purpose vehicle. During the scale-up phase, WRI will maintain general oversight of the RPB. In the commercial phase, WRI will complete the transition of the SPV to the chosen asset manager.

⁷ Full list of the Land Accelerator alumni is available at: <https://thelandaccelerator.com/network/companies/>

Figure 3: Implementation Pathway



3.3 IMPLEMENTATION CHALLENGES

The planned implementation timeline will be confronted with several challenges, requiring management strategies.

Table 3: Challenges to instrument success and mitigation strategies

Potential Challenge	Management Strategy
Difficulty or delay in fundraising due to funders and investors diverting resources towards COVID-19 emergency response.	The fundraising strategy will make the case for food security and job creation in conjunction with the need for increased climate resilience in rural economies.
Delay in holding the 2020 cohort of the Land Accelerator Africa due to travel restrictions.	Potentially convert the in-person, one-week workshop into a series of virtual events over several weeks. This has already been done with the South Asia cohort.
Timing of decisions regarding the choice of SPV management partner and the instrument's financial structure may be tight. Ideally, the SPV manager should be involved in the process.	Reflection on both issues was initiated by the Lab analyst team, who has also confirmed pro bono legal support for the legal and financial structure of the RPB. WRI will continue the process in the upcoming months, with the aim of selecting the SPV partner early in the pilot phase.

4. FINANCIAL IMPACT AND SUSTAINABILITY

4.1 PRIVATE FINANCE MOBILIZATION AND REPLICATION POTENTIAL

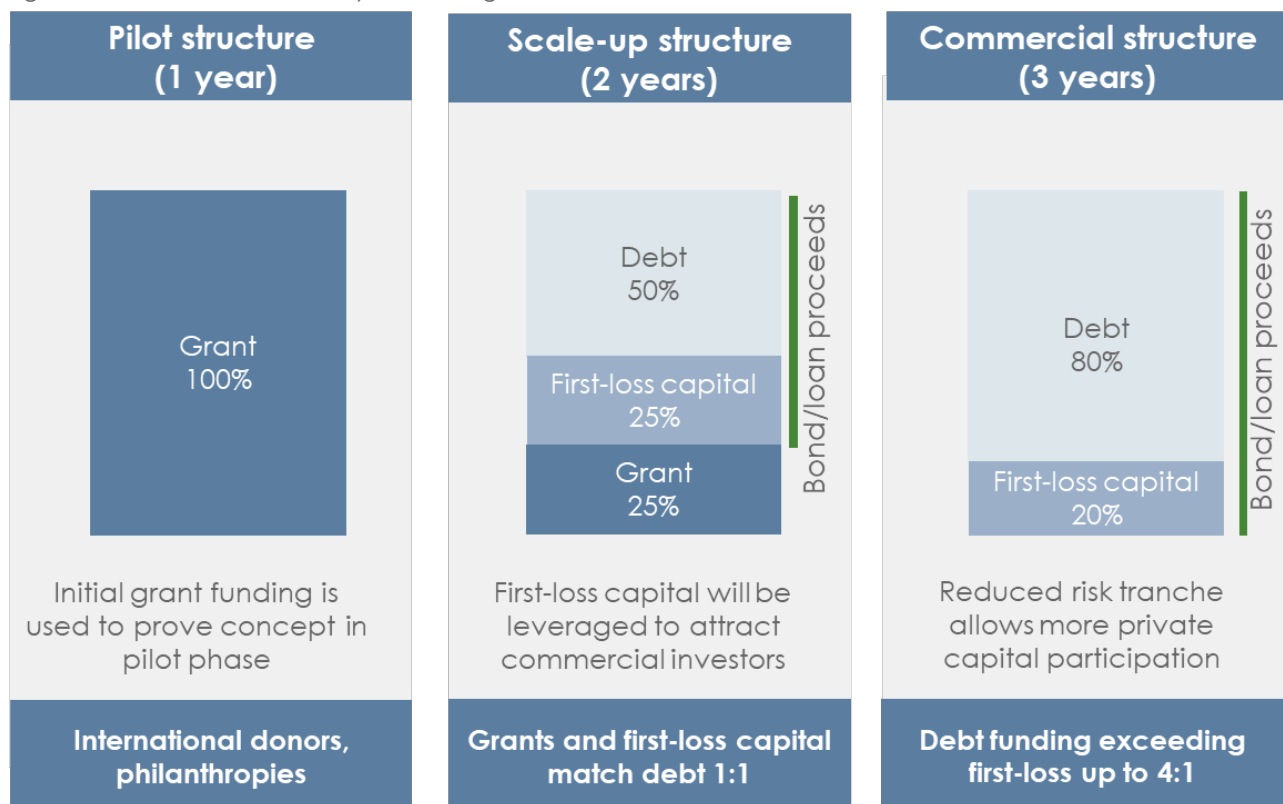
Donors and development finance institutions provide the risk tranche that will be catalytic in attracting concessional debt. Over six years, the Rural Prosperity Bond could mobilize \$74 million to extend around 390 small-size⁸ loans to restoration SMEs operating in Africa, South Asia and Latin America.

For the one-year **pilot phase**, which will enable proof of concept, the Rural Prosperity Bond will rely on grant funding. WRI has already initiated discussions with donors about the pilot phase.

In the two-year **scale-up phase**, grant funding will capitalize only around 25% of the RPB, in addition to first-loss capital and senior debt that will be raised from proceeds, for an estimated maximum of \$10 million. Together, the credit enhancement tranche of the RPB, including first-loss capital and grant financing, matches senior debt at a ratio of 1:1.

Starting with the fourth year, the Rural Prosperity Bond will reach the **commercial phase**, where the SPV is fully capitalized through bond/loan proceeds, to an estimated maximum of \$64 million. The first-loss tranche is reduced, representing one-fourth of the senior debt tranche. Given the actual and perceived risk associated with the agricultural and forestry sectors, the presence of the first-loss tranche acts as a catalyst for private investors with higher return expectations and lower risk tolerance.

Figure 4: Financial Sustainability: Attracting Private Investment



⁸ The current financial model assumes a mix of different loan sizes (\$100,000 and \$200,000 in the scale up phase) and loan tenures (12 and 24 months), to mirror the high diversity of SMEs. More details about the financial model assumptions are presented in Annex 6.4.

WRI's fundraising strategy leverages its extensive network of impact investors built through its leadership role in the [African Forest Landscape Restoration Initiative \(AFR100\)](#) and as the acting secretariat for [Initiative 20X20](#). Both regional initiatives focus on land restoration. Several of WRI's donors have expressed interest in financial mechanisms that improve rural livelihoods.

4.2 FINANCIAL MODELING

The Lab Secretariat modeling has examined the potential financial viability of the Rural Prosperity Bond at the SPV-level. The model follows a loan logic in order to enable investor repayments throughout the loan term, thereby minimizing the cost of capital. Under this assumption, principal repayments are made on a quarterly basis, based on the available cash on hand. This is different from a bond approach that would typically set regular coupons and principal payments at maturity. This consideration is particularly important given the high operating costs generated by the large number of small-size loans.

Our model aimed to optimize the net cash position of the SPV at the end of the loan term, with the net cash position defined as cash on hand less any outstanding investor balance. The main model assumptions relate to loan interest rates, loan repayment rates, operating costs and returns expected by investors (detailed in Annex 6.4).

The financial viability of the instrument was determined by examining the net cash position at the end of the instrument life as a percentage of the total capital raised. This metric shows the portion of capital that isn't returned to investors (if negative) or the financial cushion the SPV enjoys at the end of the loan term after repaying investors in full (if positive). For example, if the instrument raises a total of \$74 million, at 100% repayment rate, it ends the loan term with a net cash position of \$3,052,276, the "cushion" would be equivalent to 4.1%⁹. Alternatively, at 88% repayment rate, the SPV would have an outstanding balance of \$5,938,914 net of any cash on hand which equates to a position of -8%¹⁰. The grant funding (in the intermediary phase) together with the first-loss tranche of investments are designed to help absorb this potential risk and provide the confidence needed for more commercial debt providers to invest in the instrument. Therefore, to repay senior debt investors in full, this figure must be lower than the size of the first-loss tranche (i.e. 50% in the intermediary phase and 20% in the commercial phase).

Table 4: SPV Ending net cash position (as a percentage of total capital raised) and variation based on annual interest rate to investors and repayment rates (Assumptions: over 5 years, operating expenses 2% of AUM)

		Annual interest to investors				
		2.0%	2.5%	3.0%	3.5%	4.0%
Repayment rates	100.0%	5.8%	5.4%	5.0%	4.5%	4.1%
	95.0%	0.0%	-0.4%	-0.9%	-1.3%	-1.8%
	88.0%	-8.0%	-8.5%	-9.0%	-9.5%	-10.1%
	85.0%	-11.5%	-12.0%	-12.5%	-13.1%	-13.6%
	80.0%	-17.2%	-17.8%	-18.4%	-18.9%	-19.5%

⁹ 4.1% = \$3,052,276/\$74,000,000

¹⁰ 8% = \$5,938,914/\$74,000,000

After reviewing comparable transactions, an interest rate of 4% and default rate of 12% (i.e. 88% repayment rate) are assumed to be in line with financial instruments operating in the agricultural sector and in similar markets (CSAF & USAID, 2018; Triodos Investment Management, 2017; CSAF & USAID, 2018; Interviews). Using these assumptions as benchmarks, the RPB is comfortably able to provide the 4% interest rate to senior investors, as potential losses of up to 10.1% can be absorbed by the 20% first-loss tranche. Even if default rates reach 20% (80% repayment rate), the expected losses of 19.5% would still be covered by the first-loss tranche. In addition, thanks to the training and mentorship provided by the Land Accelerator, the instrument is expected to attain repayment rates that are higher than the 88% market average.

The sensitivity analysis presented above on the SPV net cash balance relative to the total capital demonstrates that the RPB's financial performance is well aligned with its objectives and has a capital structure that matches the expected risk and return profile.

5. ENVIRONMENTAL AND SOCIO-ECONOMIC IMPACT

At scale, the Rural Prosperity Bond can support over 18,000 rural jobs and restore 100 thousand hectares of land, equivalent to the size of Hong Kong.

5.1 ENVIRONMENTAL IMPACT

The methodology used by the Lab team (Annex 5) to estimate the economic, social, and environmental benefits generated by the Rural Prosperity Bond rests on a number of assumptions drawn from the current portfolio of SMEs who graduated from the Land Accelerator Africa in 2018 and 2019 . Given the diversity of business models, the SMEs were clustered into four categories in proportions that reflect the current portfolio:

- (1) tree-based crops (agroforestry) 40%
- (2) agricultural inputs (organic fertilizers) 20%
- (3) beekeeping 20%
- (4) timber products 20%

Future SMEs will be recruited with identical selection rules as those in the current portfolio, however the final composition of the future portfolio will depend on applicant SMEs and therefore cannot be forecast with accuracy. The impact of the instrument may vary substantially depending on the actual distribution among these four categories and the variety of activities conducted.

Over six years, including the pilot, scale-up and commercial phase, the instrument has the potential to enable more than **850,000 tCO₂eq** to be sequestered through agroforestry and timber production. This is equivalent to the annual greenhouse gas emissions from 186,000 gasoline powered cars in the USA. Agroforestry and timber production also have the capacity to improve nutrient cycling and prevent soil erosion (Nair *et al.*, 1995), while reducing drought and flood-related risks (Quandt *et al.*, 2017). Moreover, trees limit biodiversity losses, acting as natural biodiversity corridors and offering shelter to numerous species.

In total, close to 100,000 ha would be restored thanks to the Rural Prosperity Bond. This represents an area the size of Hong Kong.

Table 1 – Aggregated environmental impact estimates of the program by activity category and in total (6-year total)

Impact	Tree-based crops	Agricultural inputs	Bee-keeping	Timber products	Total
Land restored (ha)	11,320	62,735	20,930	4,313	99,299
Carbon sequestration (tCO _{2eq})	343,574	-	-	507,007	850,581

5.2 SOCIAL IMPACT

In terms of socio-economic impacts, the adoption of land restoration practices can contribute to increasing yields for over 670,000¹¹ smallholder farmers (SHFs) which are served by SMEs. On the most common East African crops¹², organic fertilizers can increase yield by 102% (ERA, 2020), beekeeping by 41% (Kasina et al., 2009), and agroforestry by 42% (Sileshi et al., 2012). However, yield increases alone do not convert into proportionally equal household income increases without boosting smallholders' ability to access markets and financial products (Farmer Income Lab, 2018; FAO, 2015).

Table 2 - Aggregated socio-economic impact estimates of the program by activity category and in total (6-year total)

Impact	Tree-based crops	Agricultural inputs	Bee-keeping	Timber products	Total
SMEs (#)	108	54	54	54	270
Jobs (#)	7,287	3,644	3,644	3,644	18,218
SHFs impacted (#)	337,039	168,519	168,519	168,519	842,597
Yield increase (% increase)	42%	102%	41%	-	

In total, the Rural Prosperity Bond can benefit over 840,000 smallholder farmers working with the SMEs that access credit and can have a significant gender impact. In the regions targeted by the instrument, a large share of farmers are women ranging from 20% in Latin America to 50% in Sub-Saharan Africa (FAO, 2020). In the previous Land Accelerator cohorts, an average of 63% of the farmers served by the SMEs are women.

Farmers will have access to quality seeds, organic fertilizers and pesticides coupled with training on appropriate use. Both the adoption of climate-smart agricultural practices (increasing yields and resistance to droughts) and the preservation of natural ecosystems improve smallholder farmers' resilience to climate change (Makate et al., 2019; Harvey et al., 2014). Some farmers will be integrated in outgrower schemes thus having better access to markets to sell their produce at fairer prices. Strengthening market linkages and producer organizations is believed to be essential to competitiveness (World Bank, 2008) and increase both SMEs and SHFs' resilience to external economic shocks (USAID, 2008). Simultaneously,

¹¹ This number is different from the total smallholder farmers impacted by the Rural Prosperity Bond, as timber products do not have an impact on crop yields, as they are typically concentrated in separate mono-cultural plantations.

¹² Maize was used to assess organic fertilizers and agroforestry's yield improvements. In terms of production volume, maize is the 1st crop in Tanzania and the 2nd crop in Kenya and Ethiopia (CountrySTAT, 2020). Beekeeping results are based on Kenyan smallholder farmers' typical crops (Beans, Cowpeas, Sunflower, Tomatoes, Capsicum, etc.; Kasina et al., 2009)

the pool of SMEs impacted by the RPB are projected to be able to provide around 18,000 jobs, essential for rural economies affected by the coronavirus pandemic.

The replication potential of the model is vast, especially in Asia and Africa, where the majority of the working population is employed in the agricultural sector¹³.

5.3 SECTORAL IMPACT

The main goal of the Lab's sustainable agriculture stream is to mobilize climate investment towards climate resilient, low emission agriculture in Sub-Saharan Africa. The Rural Prosperity Bond addresses some of the main barriers towards that, including access to credit for agri-enterprises and access to markets for smallholder farmers, while increasing their resilience to climate change.

Moreover, by promoting climate-smart solutions to restore degraded land, the RPB has the capacity to increase food security through the recovery of ecosystem services and help SMEs to create and maintain jobs. This way, **the Rural Prosperity Bond contributes to several of the Sustainable Development Goals (SDGs), including SDG 1 (No poverty), 2 (Zero hunger), 8 (Decent work and economic growth), 13 (Climate action) and 15 (Life on land).**

NEXT STEPS

Following Lab endorsement, WRI will prioritize:

- Determining the legal and financial structure for the Rural Prosperity Bond, ideally with the involvement of the selected SPV manager. The main options considered are a bond, a loan or a fund structure.
- Selecting a special purpose vehicle manager.
- Fundraising for the pilot phase.

The Rural Prosperity Bond is an innovative financial instrument, immediately actionable, with high replication potential. The instrument is estimated to produce positive social, economic and environmental impacts in rural economies in emerging markets thus helping to sustainably rebuild communities affected by the pandemic. We therefore warmly recommend the Rural Prosperity Bond for Lab's endorsement.

¹³ In most African countries, the agricultural sector employs an average of 54 percent of the working population (M. Sow, 2017)

REFERENCES

- AfDB, 2010. Smallholder Agriculture in East Africa: Trends, Constraints and Opportunities. Working Paper Series 105. Available at: https://docs.igihe.com/IMG/pdf/working_105_pdf_d.pdf
- Bala, S., Biswas, S., & Mazumdar, A. (2006). Potential of carbon benefits from eucalyptus hybrid in dry-deciduous coppice forest of Jharkhand. *Journal of Engineering and Applied Sciences*, 7, 1614-1622. Available at: <https://www.researchgate.net/publication/261145412>
- Bradbear, N., 2009. Bees and their role in forest livelihoods: a guide to the services provided by bees and the sustainable harvesting, processing and marketing of their products. *Non-wood Forest Products*, (19). Available at: <http://www.fao.org/3/i0842e/i0842e00.htm>
- Benayas, J. M. R., Newton, A. C., Diaz, A., & Bullock, J. M., 2009. Enhancement of biodiversity and ecosystem services by ecological restoration: a meta-analysis. *science*, 325(5944), 1121-1124. Doi: <https://doi.org/10.1126/science.1172460>
- Council on Smallholder Agricultural Finance (CSAF). (2019). State of the Sector. Available at: https://csaf.org/wp-content/uploads/2019/07/CSAF_State_of_Sector_2019_Full_Final.pdf
- Council on Smallholder Agricultural Finance (CSAF) and USAID. (2018). CSAF financial benchmarking. Final learning report. Available at: https://www.agrilinks.org/sites/default/files/usaids_csaf_financial_benchmarking_final_learning_report.pdf
- CountrySTAT, 2020. FAO. Available at: <http://www.fao.org/in-action/countrystat/en/>
- Dalberg (2018). The Economics of Agri-SME Lending in East Africa. Available at: https://www.agrilinks.org/sites/default/files/resources/the_economics_of_agri_sme_lending_in_east_of_rica_final_report.pdf
- ELD initiative, 2015. The Economics of Land Degradation in Africa. Available at: https://www.eld-initiative.org/fileadmin/pdf/ELD-unep-report_07_spec_72dpi.pdf
- FAO, 2015. The economic lives of smallholder farmers: An analysis based on household data from nine countries Rome. 48 pages. Available at: <http://www.fao.org/3/a-i5251e.pdf>
- FAO, 2018. Koronivia Joint Work on Agriculture: Analysis of Submissions. Environment and Natural Resources Management Series, Working Paper 71, Rome. 52 pages. Available at: <http://www.fao.org/3/CA2586EN/ca2586en.pdf>
- FAO, 2020. The female face of Farming. FAO. Available at: <http://www.fao.org/gender/resources/infographics/the-female-face-of-farming/en/>
- FAOSTAT, 2019. Food and Agriculture Organization of the United Nations (FAO). Rome, Italy. Available at: <http://faostat3.fao.org/home/E>
- Farmer Income Lab, 2018. What works to increase smallholder farmers' income? A Landscape review. Working draft for discussion. Available at: https://www.farmerincomelab.com/sites/g/files/jydpvr621/files/2019-09/What%20Works_FINAL_9.19.pdf
- FSIN, 2020. Global Report On Food Crises: Joint Analysis For Better Decisions. Available at: <http://www.fao.org/3/ca8786en/CA8786EN.pdf>
- Garrity, D.P., et al. (2010). Evergreen Agriculture: a robust approach to sustainable food security in Africa. *Food Security*, 2(3), 197-214. doi: <https://doi.org/10.1007/s12571-010-0070-7>

- Gibbs et al., 2015. Mapping the world's degraded lands. *Applied geography*, 57, 12-21. Available at: <https://doi.org/10.1016/j.apgeog.2014.11.024>
- Griscom, B. W., Adams, J., Ellis, P. W., Houghton, R. A., Lomax, G., Miteva, D. A., ... & Woodbury, P., 2017. Natural climate solutions. *Proceedings of the National Academy of Sciences*, 114(44), 11645-11650. Doi: <https://doi.org/10.1073/pnas.1710465114>
- Harvey, C. A., Rakotobe, Z. L., Rao, N. S., Dave, R., Razafimahatratra, H., Rabarijohn, R. H., ... & MacKinnon, J. L., 2014. Extreme vulnerability of smallholder farmers to agricultural risks and climate change in Madagascar. *Philosophical Transactions of the Royal Society B: Biological Sciences*, 369(1639), 20130089. doi: <http://dx.doi.org/10.1098/rstb.2013.0089>
- ISF Advisors, Mastercard Foundation Rural and Agricultural Finance Learning Lab. (2019). Pathways to Prosperity. Rural and Agricultural Finance State of the Sector Report. Available at: <https://pathways.rafllearning.org/>
- ISF Advisors, Rural and Agricultural Finance Learning Lab (RAFL), Feed the future initiative, 2020a. Agri-SMEs operating in uncertain financial, operational, and supply chain conditions. available at: https://www.rafllearning.org/sites/default/files/covid19_pathway4_brief3.pdf?token=qphZbIML
- ISF Advisors, Rural and Agricultural Finance Learning Lab (RAFL), Feed the future initiative, 2020b. High-risk households dependent on, and critical for, food supply chains. Available at: https://www.rafllearning.org/sites/default/files/covid19_pathway2_brief2.pdf?token=LXA728h5
- Kasina, J. M., Mburu, J., Kraemer, M., & Holm-Mueller, K., 2009. Economic benefit of crop pollination by bees: a case of Kakamega small-holder farming in western Kenya. *Journal of economic entomology*, 102(2), 467-473. doi: <https://doi.org/10.1603/029.102.0201>
- King, L. E., Douglas-Hamilton, I., & Vollrath, F., 2007. African elephants run from the sound of disturbed bees. *Current Biology*, 17(19), R832-R833. Doi: <https://doi.org/10.1016/j.cub.2007.07.038>
- Luedeling, E. and Henry Neufeldt. (2012). Carbon sequestration potential of parkland agroforestry in the Sahel. *Climate Change* 115, 443-461. doi: <https://doi.org/10.1007/s10584-012-0438-0>
- Makate, C., Makate, M., Mango, N., & Siziba, S., 2019. Increasing resilience of smallholder farmers to climate change through multiple adoption of proven climate-smart agriculture innovations. Lessons from Southern Africa. *Journal of environmental management*, 231, 858-868. doi: <https://doi.org/10.1016/j.jenvman.2018.10.069>
- Mbow, C., et al. (2014). Achieving mitigation and adaptation to climate change through sustainable agroforestry practices in Africa. *Current Opinion in Environmental Sustainability*, 6, 8-14. doi: <https://doi.org/10.1016/j.cosust.2013.09.002>
- Nair, P. K. R., Kang, B. T., & Kass, D. C. L., 1995. Nutrient Cycling and Soil - Erosion Control in Agroforestry Systems. *Agriculture and the environment: bridging food production and environmental protection in developing countries*, 60, 117-138. doi: <https://doi.org/10.2134/asaspecpub60.c7>
- Nath, A. J., Lal, R., & Das, A. K., 2015. Managing woody bamboos for carbon farming and carbon trading. *Global Ecology and Conservation*, 3, 654-663. doi: <https://doi.org/10.1016/j.gecco.2015.03.002>
- Quandt, A., Neufeldt, H., & McCabe, J. T. (2017). The role of agroforestry in building livelihood resilience to floods and drought in semiarid Kenya. *Ecology and Society*, 22(3). Available at: <https://www.jstor.org/stable/26270151>
- Sileshi, G. W., Debusho, L. K., & Akinnifesi, F. K., 2012. Can integration of legume trees increase yield stability in rainfed maize cropping systems in Southern Africa?. *Agronomy Journal*, 104(5), 1392-1398. doi: <https://doi.org/10.2134/agronj2012.0063>

M. Sow, 2017. Figures of the week: Sub-Saharan Africa's labor market in 2017. Brookings. Available at: <https://www.brookings.edu/blog/africa-in-focus/2017/01/11/figures-of-the-week-sub-saharan-africas-labor-market-in-2017/>

Triodos Investment Management. (2017). Triodos Sustainable Trade Fund. Annual Report 2017. Available at: <https://www.triodos-im.com/binaries/content/assets/tim/annual-reports/tstf/tstf-annual-report-2017.pdf>.

USAID, 2018. CSAF financial benchmarking. Final learning report. Available at: https://www.dropbox.com/preview/CF-Program/1.Workstreams/Innovation/the%20lab%20-%20the%20files/11%20Sixth%20cycle/Ag_LA%20Bond/5_Library/2018_csaf_financial_benchmarking_final_learning_report.pdf?role=work

World Bank, 2008. World Development Report 2008 : Agriculture for Development. Available at: <https://openknowledge.worldbank.org/handle/10986/5990>

World Resources Institute (WRI) and The Nature Conservancy. (2018). The Business of Planting Trees. A Growing Investment Opportunity. Available at: https://files.wri.org/s3fs-public/business-planting-trees_0.pdf

World Resources Institute (WRI). (2017). Roots of Prosperity: The Economics and Finance of Restoring Land. Available at: https://files.wri.org/s3fs-public/roots-of-prosperity_0.pdf

World Resources Institute (WRI), 2020. Available at: <https://www.wri.org>

World Resources Institute (WRI), 2015. AFR100: Africa Restoring 100 Million Hectares of Deforested and Degraded Land by 2030. Available at: <https://www.wri.org/resources/data-visualizations/afr100-africa-restoring-100-million-hectares-deforested-and-degraded>

6. ANNEXES

6.1 ANNEX 1 – LAND ACCELERATOR SELECTION CRITERIA

The Land Accelerator generates a pipeline of curated SMEs that are eligible for loans from the Rural Prosperity Bond. After the Rural Prosperity Bond proof of concept is established through the initial loan cycles, the eligibility criteria will be extended to include SMEs that are not Land Accelerator graduates but have similar potential.

The Accelerator's selection criteria are:

- Commercial viability (Profitability) – expectations for revenues and profit
- Scalability or growth potential
- Replicability
- Environmental Impact (carbon sequestration, biodiversity, soil quality)
- Social impact (job creation, women employed, benefits to local community)

Additional company due diligence will be performed by the SPV prior to loan approval. This may include

- Audited financial statements
- Operating history of at least two years
- References (from investors, customers and suppliers)
- Recent photos or video calls showing assets and operations

6.2 ANNEX 2 - FULL LIST OF COMPARABLE INSTRUMENTS

Table 6.1.1 Funds and SPVs reviewed

Fund name	Fund managers	Region	Investors	Invest type	Focus on restoration	Focus on SMEs	Ticket Size
&Green Fund	IDH Sustainable trade Initiative	Multi-region		Debt	Yes	Yes	USD 10M
AAF SME Fund	Databank Agrifund Manager	Africa	African Agriculture Fund	Equity	No	Yes	USD 150k-4M
AATIF	Deutsche Bank	Africa	Deutsche Bank	Debt & Equity	No	Yes	USD 5M-30M
Aceli Africa	Aceli Africa, GDI, CSAF	Africa		Debt	No	Yes	
Acumen Resilient Agriculture Fund (ARAF)	Acumen	Eastern Africa	Green Climate Fund, FMO	Debt	Yes	Yes	USD 2M
Africa Enterprise Challenge Fund (AECF)	AECF	Sub Saharan Africa	UK & Dutch governments , CGAP, IFAD	Debt	No	Yes	USD 250k-1.5M
Africa Food Security Fund (AFSF)	Zebu Investment	Africa		Equity	No	Yes	
Africa Seed Investment Fund (ASIF)	Pearl Capital	Eastern Africa	Alliance for a Green Revolution in Africa (AGRA)	Debt & Equity	No	Yes	USD 50k-1.5M
African Agricultural	Pearl Capital	Eastern Africa	Rockefeller, Gates, and Gatsby	Debt & Equity	No	Yes	USD 600k-3.8M

Capital Fund (AACF)			Foundations, JP Morgan Chase Social Finance, USAID				
AgDevCo	AgDevCo	Africa	DFID, USAID, Dutch Gov, AGRA, Rockefeller Foundation	Debt & Equity	No	Yes	USD 100k-10M
Agri-Business Capital Fund (ABC Fund)	IFAD	Africa, Latin America, Asia		Debt & Equity	No	Yes	
Agricultural Finance Corporation	Agricultural finance corporation (Gov owned)	Kenya		Debt	No	No	
AgriFI	EDFI Management company	Africa, Latin America, Asia	EU	Debt & Equity	No	Yes	EUR 1M-5M
Agri-Vie Fund I & II	Exeo Capital	Africa	DBSA, Norfund, EIB, IFC, Kellogg foundation	Equity	No	Yes	USD 6M
Athelia Climate Fund	Athelia Ecosphere	Multi-region	EIB, Finnfund, FMO	Debt	Yes	No	
Crop Farming Loans	Juhudi Kilimo	Kenya		Debt	No	No	
Dutch Fund for Climate Development (DFCD) - Land Use	FMO	Africa		Debt & Equity	Yes	?	
eco.business Fund	Finance in motion	Multi-region		Debt	Yes	Yes	
EcoEntreprises Partners/Fondo EcoEmpresas	EcoEntreprises Capital Management LLC	Latin America	IDB, EIB, FMO, Nature Conservancy, JPM&C...	Equity	Yes	Yes	USD 500k-3M
Fairtrade Access Fund	Inconfin	Multi-region	Fairtrade International, Grameen Foundation, OPIC, KfW, Starbucks Coffee etc.	Debt	No	Yes	USD 150k-300k
Forest Resilience Bond	FRB Yuba Project I LLC	Western US		Debt	Yes	No	
Injaro Agricultural Capital Holdings Limited	Injaro Investments Limited	Western Africa	AGRA, Lundin Foundation, Soros Economic Development Fund, CDC, FMO, PROPARCO	Debt & Equity	No	Yes	USD 300k-3M
Rabo Rural Fund	Rabobank Foundation	Multi-region	Rabobank Foundation, Dutch government, Cordaid	Debt	No	Yes	USD 200k-2M
Root Capital	Root Capital	Multi-region	OPIC, USAID, IDB, Gates Foundation, ...	Debt	No	Yes	USD 50k-2M
SME Impact Fund	Match Maker Fund Management	Tanzania	Hivos and Cordaid	Debt	No	Yes	USD 60k-600k

Terra Bella Fund	Terra Global Investment Management LLC	Multi-region	OPIC, ...	Debt & Equity	Yes	No	
The Moringa Fund	Moringa Partnership SCA	Africa	La Compagnie Benjamin de Rothschild, FISEA, CAF, Finfund, FMO, AfDB	Equity	Yes	Yes	EUR 4M-10M
Verde Ventures	Conservation International	Multi-region	AFD, GEF, OPIC, IFC, private companies etc	Debt & Equity	Yes	Yes	USD 30k-50k
Voxtra East Africa Agribusiness Fund	Voxtra	Eastern Africa	Norfund, Grieg International, Kavlifondet	Equity	No	Yes	USD 500k-3M
Yield Uganda Investment Fund (Yield)	Pearl Capital	Uganda	IFAD, National Security Fund Uganda (NSSF)	Debt & Equity	No	Yes	USD 250k-2M

Table 6.1.2 Bonds reviewed

Issuer (Name)	Region	Bond label	Bond type ¹⁴	Focus on restoration	Focus on SMEs
African development Bank	Africa	Green	Portfolio	Yes	No
Agricultural Bank of China	China	Green	Portfolio	No	No
Agricultural Development Bank of China	China	Green	Portfolio	Yes	No
Brf SA	Brazil	Green	Portfolio	Yes	No
FIRA	Mexico	Green	Portfolio	Yes	No
Government of Poland	Poland	Green	Portfolio	Yes	No
Government of Seychelles	Seychelles	Blue	Project	Yes	No
Marfig	Brazil	Sustainable transition	Portfolio	No	No
IFC (IFC Forests Bond)	Kenya	Green	Project	Yes	No
Skeaskog	Norway	Green	Portfolio	Yes	No
State of Hawaii	USA	Green	Portfolio	Yes	No
Sustainable Investment Management (Responsible Commodities Facility)	Brazil	Green	Project	Yes	Yes
Suzano Pulp & Paper	Brazil	Green	Portfolio	Yes	No
TLFF Indonesia (PT Royal Lestari Utama)	Indonesia	Green	Project	Yes	No
Washington State	USA	Green	Portfolio	Yes	No
Water Finance Facility (Kenya pooled water fund)	Kenya	Green	Project	No	No
World Bank (IRBD funding program - Green Bond)	Multi-region	Green	Portfolio	Yes	No
TLFF Indonesia (PT Royal Lestari Utama)	Indonesia	Green	Project	Yes	No
Washington State	USA	Green	Portfolio	Yes	No

¹⁴The bond type reflects whether the proceeds were used for a specific project (project) or for multiple operations (portfolio).

Water Finance Facility (Kenya pooled water fund)	Kenya	Green	Project	No	No
World Bank (IRBD funding program - Green Bond)	Multi-region	Green	Portfolio	Yes	No

6.3 ANNEX 3 - QUANTITATIVE MODELING ASSUMPTIONS

The financial model presented in 4.1 Quantitative modeling is based on the following assumptions:

Model parameters	Value
Bond maturity (#years)	5
Annual interest to investors (% capital invested)	3%
Operating expenses (% of AUM)	2%
SME loan repayment rate (% of principal and interest)	95.7%

The following distribution of loans per year used for the model projections is based on the estimated number of SMEs graduating from the Land Accelerator in upcoming years in addition to the current pool of graduates. Some of the SMEs are expected to apply for second or third loans. I.e., the number of loans exceeds the number of SMEs.

Summary of SME loans placed per year		
Year	Amount	#Loans
Year 1	2,000,000	20
Year 2	8,000,000	40
Year 3	16,000,000	80
Year 4	24,000,000	120
Year 5	24,000,000	120
Total	74,000,000	380

In order to incorporate the multiple countries of operation in the model, the Lab team of analysts used as benchmark the interest rates of the three countries where the pilot phase loans will be given: Kenya, Ethiopia and Rwanda.

Country	Interest rate	Finance institution/Details	Source
Kenya	7%	Central Bank of Kenya	https://tradingeconomics.com/kenya/interest-rate
	8%	Lending rate in foreign currency May 2020	https://data.imf.org/regular.aspx?key=61545855
	11 to 13%	Annual interest rate - banks credit	https://cost-of-credit.com/
	14%	Nic Bank - dynamic calculation	https://www.nic-bank.com/ke/borrow-from-us/loan-calculator/
Ethiopia	7% to 9%	Interest rates on savings deposit	https://nbebank.com/wp-content/uploads/pdf/directives/microfinancebusiness/interest-rate.pdf
	14.25%	Average Lending Rate - (2018/2019)	https://nbebank.com/wp-content/uploads/2020/02/Second-Quarter-Report-2019-20.pdf
Rwanda	4.5%	Central Bank Rate	https://www.bnr.rw/browse-in/financial-market/money-market-interest-rates/monthly-interest-rates/
	16.06%	Lending rate May 2020	https://data.imf.org/regular.aspx?key=61545855

Based on these benchmark interest rates, the financial model assumes three types of countries (Country 1, 2, 3 below), each one being characterized by a higher interest rate and a discounted one (minus 2%) for the two different types of loan uses (as detailed in section 1.2: Access to finance).

Country	Annual interest rate
Country 1	10%
	8%
Country 2	16%
	14%
Country 3	9%
	7%

Therefore, 11 distinct loan types were modelled combining different country type, loan size, number of loans per type, loan term, annual interest rate and the year of placement. The assumed distribution of loans is detailed in the table below.

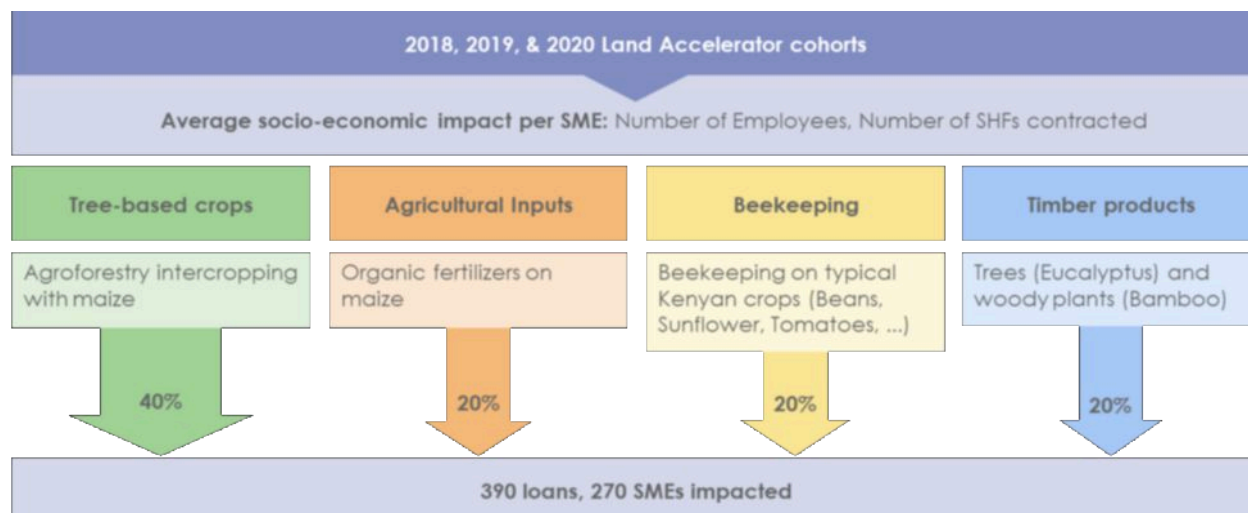
Loan type	Country	Loan size	#loans	Total	Term (#months)	Annual interest rate	Year placement
A	Country 1	100,000	20	2,000,000	12	10%	1
B	Country 1	200,000	20	4,000,000	12	10%	2
C	Country 1	200,000	40	8,000,000	12	8%	3
D	Country 2	200,000	40	8,000,000	12	16%	4
E	Country 2	200,000	40	8,000,000	24	14%	3
F	Country 3	200,000	40	8,000,000	24	9%	4
G	Country 3	200,000	20	4,000,000	24	7%	2
H	Country 1	200,000	40	8,000,000	24	8%	4
K	Country 2	200,000	40	8,000,000	12	16%	5
L	Country 3	200,000	40	8,000,000	12	7%	5
M	Country 1	200,000	40	8,000,000	12	10%	5
			380	74,000,000			

6.4 ANNEX 4 - IMPACT ASSESSMENT METHODOLOGY

Considering the variety of activities undertaken by the SMEs that graduated from the Land Accelerator, the Lab analysts developed a three-step approach to assessing the environmental and socio-economic impact of the Rural Prosperity Bond:

1. Classify SMEs' activities into four main categories,
2. For each category, calculate the **average annual impact of one SME**,
3. Forecast the overall impact of the instrument based on the expected number of SMEs it will reach and their distribution among the four categories.

Figure 3 - Impact assessment three-step approach.



1. SME classification

The two Africa Land Accelerator cohorts represent 26 SMEs. The following table summarizes their main activities.

Table 3 - Main activity of Land Accelerator SMEs (2018 and 2019 cohorts)

Sector	Activity category	Description	Number of SMEs
Agriculture	Tree-based crops	Agroforestry	7
Agriculture	Agricultural inputs	Organic fertilizers	4
Agriculture	Beekeeping	Hives on smallholder farmlands	3
Agriculture	Other		4
Forestry	Timber products	Eucalyptus, Bamboo	4
Other	Other		2

Four consistent categories stand out and represent close to 70% of all SMEs: (1) tree-based crops, (2) agricultural inputs, (3) beekeeping, and (4) timber products. Moreover, these activities have at least partially trackable environmental and social impacts. We therefore focused our analysis on these four main activities, and allocated one of them to every SME projected to be eligible for the RPB loans.

2. Social and environmental impact per SME by activity category

Impact estimates were built thanks to two main sources of information: results from surveys conducted by WRI on the Land Accelerator graduates and scientific literature review (with the best geographical consistency found).

For each average SME belonging to one of the four categories of activity, five impact metrics were calculated:

- Number of employees (Cohort surveys)
- Number of smallholder farmers impacted (Cohort surveys)
- Number of hectares restored per year (Cohort surveys)
- Carbon dioxide sequestered per year
- Yield increase

The first three metrics were calculated based on the survey results. The number of employees (full-time, part-time, and seasonal combined) and the number of SHFs are averages calculated using the entire pool of SMEs (the two African cohorts and the Asian cohort). The average number of hectares restored is specific to each activity and is only based on the two African cohorts (on which more information is available). The two final metrics (CO₂ and Yield increase) were calculated using proxy factors found in scientific papers. When applicable to multiple agricultural branches (organic fertilizers, beekeeping, agroforestry), the following values correspond to studies conducted on maize crops. Indeed, maize is the dominant crop in Kenya, the country with the most SMEs among the Land Accelerator cohorts.

Table 4 - Literature review-based estimates by activity category

Activity category	Sub-category	Impact	Average Value	Source
Tree-based crops	Agroforestry	Yield increase	42%	Sileshi, G. W., Debusho, L. K., & Akinnifesi, F. K., 2012. Can integration of legume trees increase yield stability in rainfed maize cropping systems in Southern Africa?. <i>Agronomy Journal</i> , 104(5), 1392-1398.
Tree-based crops	Agroforestry	Carbon sequestration	6 tCO₂/ha/yr	Garrity, D.P., et al. (2010). Evergreen Agriculture: a robust approach to sustainable food security in Africa. <i>Food Security</i> , 2(3), 197-214.
				Luedeling, E. and Henry Neufeldt. (2012). Carbon sequestration potential of parkland agroforestry in the Sahel. <i>Climate Change</i> 115, 443-461.
				Mbow, C., et al. (2014). Achieving mitigation and adaptation to climate change through sustainable agroforestry practices in Africa. <i>Current Opinion in Environmental Sustainability</i> , 6, 8-14.
Agricultural inputs	Organic fertilizers	Yield increase	101.9%	On maize crops using CGIAR's estimation tool: ERA, 2020. Available at: https://era.ccafs.cgiar.org/analysis/examine-outcomes/
Beekeeping	N/a	Yield increase	41%	Average based on multiple crops: Kasina, J. M., Mburu, J., Kraemer, M., & Holm-Mueller, K., 2009. Economic benefit of crop pollination by bees: a case of Kakamega small-holder farming in western Kenya. <i>Journal of economic entomology</i> , 102(2), 467-473.
Forestry	Bamboo	Carbon sequestration	35 tCO₂/ha/yr	Nath, A. J., Lal, R., & Das, A. K., 2015. Managing woody bamboos for carbon farming and carbon trading. <i>Global Ecology and Conservation</i> , 3, 654-663.
Forestry	Eucalyptus	Carbon sequestration	8 tCO₂/ha/yr	Bala, S., Biswas, S., & Mazumdar, A. (2006). Potential of carbon benefits from eucalyptus hybrid in dry-deciduous coppice forest of Jharkhand. <i>Journal of Engineering and Applied Sciences</i> , 7, 1614-1622.

2.A Tree-based crops

Table 5 - Annual impact of an average tree-based crops SME

Impact	Average value	Metric
Number of Employees	67	Employees
Number of contracted SHFs	3,086	Smallholder farmers
Hectares restored per year	104	ha/year
Carbon sequestrated per year	629	tCO ₂ /year
Yield increase	42%	Yield increase

As observed in the Land Accelerator cohorts, the model assumes that the SMEs in this category conduct agroforestry activities. Among the four categories, it is the one that has the widest range of impacts with both a mitigation (629 tCO₂ sequestrated per year) and a yield increase potential (42%).

2.B Agricultural inputs

Table 6 - Annual impact of an average agricultural inputs SME

Impact	Average value	Metric
Number of Employees	67	Employees
Number of contracted SHFs	3,086	Smallholder farmers
Hectares restored per year	1,149	ha/year
Carbon sequestrated per year	-	tCO ₂ /year
Yield increase	102%	Yield (kg) percent increase

SMEs selling organic fertilizers to smallholder farmers have the largest impact in terms of restored farmland (1,149 ha/year on average). In Eastern Africa, where some of the main crops' yields are no longer improving (maize) or even decreasing (roots and tubers) due to land degradation (FAO DATABASE), converting SHFs to organic fertilizer usage is crucial. Simultaneously, locally produced organic fertilizers (made from agricultural wastes), are less subject to price volatility (FAO, 2018) than synthetic fertilizers. Therefore, the use of locally produced organic fertilizers, while avoiding the GHG emissions inherent to the production and transportation of synthetic fertilizers, increase the resilience of farmers. For example, major disruptions in synthetic fertilizer importations occurred during the COVID-19 crisis.

2.C Beekeeping

Table 7 - Annual impact of an average beekeeping SME

Impact	Average value	Metric
Number of Employees	67	Employees
Number of contracted SHFs	3,086	Smallholder farmers
Hectares restored per year	383	ha/year
Carbon sequestered per year	-	tCO ₂ /year
Yield increase	41%	Yield (kg) percent increase

The main environmental benefit of beekeeping is crop pollination. By training smallholder farmers to beekeeping practices, these SMEs ensure stable honey and bee wax production while improving the farmers' agricultural yields. Honeybees can also protect crops from various pests (Bradbear, 2009).

2.D Timber products

Table 8 - Annual impact of an average timber products SME

Impact	Average value	Metric
Number of Employees	67	Employees
Number of contracted SHFs	3,086	Smallholder farmers
Hectares restored per year	79	ha/year
Carbon sequestered per year	1,857	tCO ₂ /year
Yield increase	-	Yield (kg) percent increase

This category of SME has the greatest mitigation impact (1,852 tCO₂/year). Both eucalyptus and bamboo crops were included in these estimations. Woody bamboos are fast growing plants allowing for high plot densities and resulting in significant carbon sequestration. In Ethiopia, where bamboo is an indigenous species, the bamboo sector development could be a tremendous opportunity.

3. Forecast of instrument impact

3.A Assumptions

To assess the impact of the instrument, four additional assumptions were made.

First, the SMEs that benefit from the RPB are distributed as follows:

- Tree-based crops – 40%,
- Agricultural inputs – 20%,
- Beekeeping – 20%,
- Timber products – 20%.

Second, every time a loan is given to a SME, the analysis attributed 70% of the annual SME impact to the RPB (as assessed in section 2). This percentage is close to the ratio between the average loan size and the average annual SME revenue.

Third, when assessing carbon sequestration, the impact of a loan lasts for 5 years.

Finally, the total number of loans is equal 390 and the number of SMEs reached to 270.

3.B Results

The following table summarizes the overall impact of the RPB over 6 years (1-year pilot, 5-year SPV):

Table 9 - Aggregated impact estimates of the Rural Prosperity Bond by activity category over 6 years

Impact	Tree-based crops	Agricultural inputs	Beekeeping	Timber products	Total
SMEs (#)	108	54	54	54	270
Employees (#)	7,287	3,644	3,644	3,644	18,218
SHFs impacted (#)	337,039	168,519	168,519	168,519	842,597
Land restored (ha)	11,320	62,735	20,930	4,313	99,299
Carbon sequestration (tCO _{2eq})	343,574	-	-	507,007	850,581
Yield increase (% increase)	42%	102%	41%	-	(674,078 SHFs affected)